



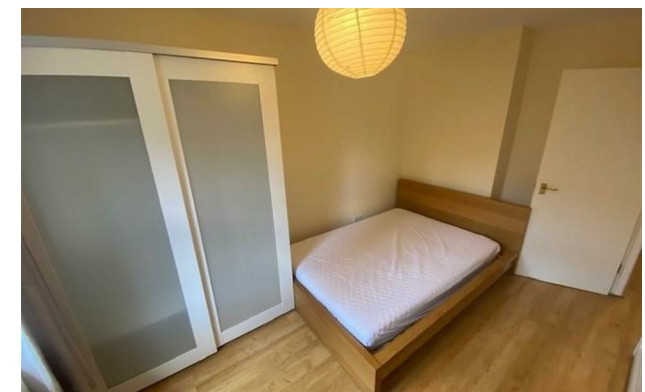
*jordan fishwick*

**WEST DIDSBURY**  
The Beeches



## The Beeches, West Didsbury, M20 2BG

Guide Price £200,000



### The Property

A stylishly presented, two bed roomed apartment, enjoying a top floor position in a purpose built development, tucked away towards the bottom of a small cul-de-sac in fashionable West Didsbury, making it an ideal purchase for a range of buyers.

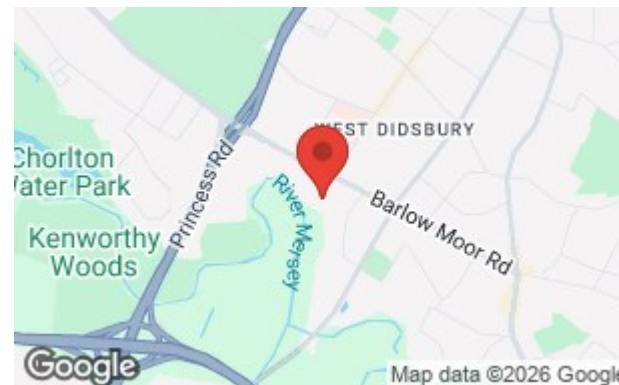
In outline:- Communal entrance, private entrance hall, lounge/dining room, fitted kitchen with a range of units, two bedrooms and fitted bathroom. The tastefully presented living space is warmed by gas central heating, which is further complemented by UPVC double glazing.

Outside, there is an allocated parking space.

The Beeches is a popular residential road in Fashionable West Didsbury, close to Burton Road. The vibrant shops, bars and restaurants, along with the Metrolink, motorway network and walks along the River Mersey are on the doorstep and as such it provides a great opportunity.

### Directions

M20 2BG



- Top floor apartment
- Two bedrooms
- Living room
- Fitted kitchen & bathroom
- uPVC double glazing
- Gas central heating
- Allocated parking
- Located on a small cul-de-sac
- Great location in West Didsbury
- Close to Burton Road

Postcode - M20 2BG

EPC Rating - D

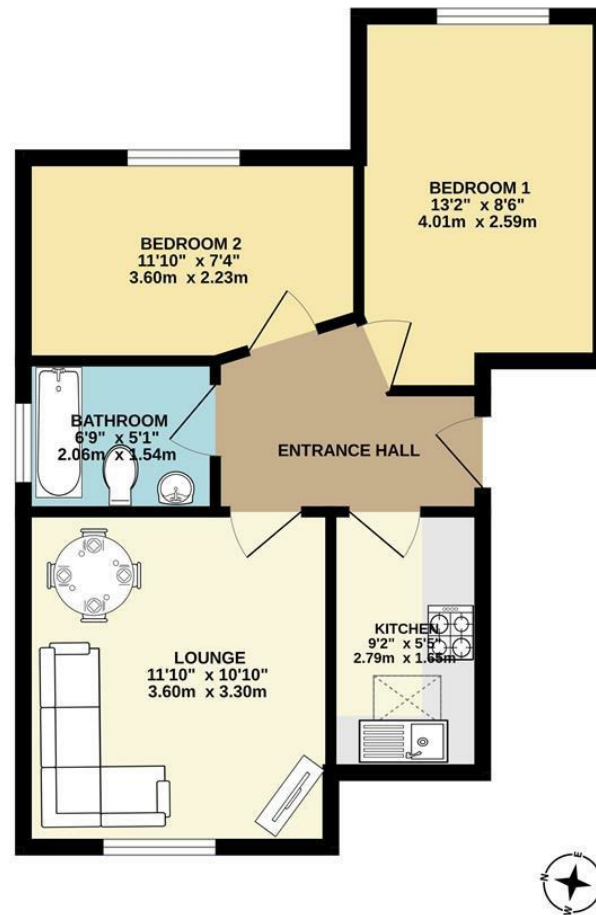
Floor Area - sq ft

Local Authority - Manchester City Council

Council Tax - C



TOP FLOOR



Measurements are approximate. Not to scale. Illustrative purposes only.  
Made with Metropix ©2025



These particulars are believed to be accurate but they are not guaranteed and do not form a contract. Neither Jordan Fishwick nor the vendor or lessor accept any responsibility in respect of these particulars, which are not intended to be statements or representations of fact and any intending purchaser or lessee must satisfy himself by inspection or otherwise as to the correctness of each of the statements contained in these particulars. Any floorplans on this brochure are for illustrative purposes only and are not necessarily to scale.

Offices also at: Wilmslow, Macclesfield, Hale, Sale, Chorlton, Glossop, Manchester & Salford

757-759 Wilmslow Road, Didsbury Village, Manchester

0161 445 4480

didsbury@jordanfishwick.co.uk  
www.jordanfishwick.co.uk